

The background of the entire page is a light-colored, marbled paper with soft, organic patterns in shades of cream, beige, and light brown. The marbling is most prominent in the upper half of the page, creating a textured, artistic feel.

ARTPOLY

Creativity Flows With Artpoly

ARTPOLY

BROCHURE

ABOUT US

Why ARTPOLY®

Built for Performance. Designed for Reliability.

ARTPOLY® is not just a resin supplier — we are a **manufacturing partner** focused on consistency, customization, and long-term value.

We combine **advanced formulation expertise, robust quality control, and application-driven development** to support manufacturers who cannot afford variability, downtime, or surprises.

Why Customers Choose ARTPOLY®

1. Consistent Quality, Batch After Batch

Our resins are produced under strict quality control protocols to ensure repeatability, process stability, and predictable performance — every time.

2. Application-Driven Formulations

We don't sell "one-size-fits-all" products.

Our technical team works closely with customers to tailor viscosity, reactivity, curing behavior, and mechanical properties to real production needs.

3. Broad Product Portfolio, One Trusted Source

From UPR and gelcoats to acrylic systems and pigment pastes, ARTPOLY® offers a comprehensive range that supports multiple applications under one brand, simplifying procurement and technical alignment.

4. Reliable Supply & Responsive Support

We understand that production delays cost money. Our operations are structured to ensure dependable supply, responsive communication, and fast technical support when it matters most.

5. Compliance with International Standards

ARTPOLY® products are developed to comply with relevant international standards and industry requirements, ensuring confidence for local and export-oriented manufacturers.

Industries We Serve

- Solid Surface & Artificial Marble
- GRP & Fiberglass Manufacturing
- Construction & Infrastructure
- Automotive & Industrial Components
- Marine, Piping & Storage Systems

Our Commitment

At ARTPOLY®, we measure success by our customers' production efficiency, product quality, and long-term trust. When performance matters, processes matter — and partnerships matter even more.

Unsaturated Polyester Resin (UPR)

Casting Type

(Solid Surface)

Orthophthalic Type

Features:

- Exceptional wetting properties.
- Accommodates high filler loads effectively and shows excellent pigment mixing
- Superior crack resistance with excellent flexural strength
- Low styrene emission

Isophthalic Type

Features:

- Exceptional wetting properties
- Excellent UV resistance
- Superior crack resistance with excellent flexural strength
- Excellent water and chemical resistance
- High heat deflection temperature
- Suitable for outdoor applications

Applications:

- Sinks and washbasins
- Kitchen countertops
- Decorative wall panels
- Restaurant tabletops
- Bathroom vanities



Product	Modifications	Type	Gel time (mins)	Solid Content (%)	Viscosity (cps)	Acid Value (mg KOH)	Remarks
ARTPOLY® 120	-, P	Ortho	15 – 25	67 – 70	900 – 1100	15 – 25	Economy Grade
ARTPOLY® 150	PA	Ortho	15 – 25	67 – 70	900 – 1300	20 – 30	Economy Grade
ARTPOLY® 160	PA, UV	Ortho	15 – 25	67 – 70	900 – 1300	20 – 30	-
ARTPOLY® 180	PA, UV, MMA	Ortho	15 – 25	67 – 70	900 – 1300	20 – 30	-

• **Viscosity and gel time are customizable and can be tailored to meet customer requirements.**

• Modification symbols:

- PA: Pre-Accelerated
- UV: UV Stabilized
- MMA: Acrylic Modified

• Gel time is measured at 25°C with:

- 0.1% Co Octoate (10% Solution)
- 1% MEKP (Butanox M-50)

Hand Lay-Up, Spray Lay-Up

Orthophthalic Type Features:

- General Purpose UPR
- Excellent fiber wettability
- Low volumetric shrinkage

Isophthalic Type Features:

- UV and color degradation resistant
- Excellent water and chemical resistance

Applications:

- Boat hulls
- Storage tanks
- Roofing sheets
- Sports equipment like kayaks and canoes
- Wind turbine blades



Product	Modifications	Type	Gel time (mins)	Solid Content (%)	Viscosity (cps)	Acid Value (mg KOH)	Remarks
ARTPOLY® 210	PA	Ortho	20 – 30	58 – 63	200 – 250	15 – 25	Economy Grade
ARTPOLY® 210 – TP	-	Ortho, Thixotropic	20 – 30	58 – 63	600 – 700	15 – 25	Economy Grade
ARTPOLY® 220	PA	Ortho	20 – 30	58 – 63	400 – 500	15 – 25	-
ARTPOLY® 220 – TP	-	Ortho, Thixotropic	20 – 30	58 – 63	750 – 850	15 – 25	-
ARTPOLY® 230	PA	Ortho	20 – 30	58 – 63	300 – 400	10 – 20	Premium Grade
ARTPOLY® 230 – TP	-	Ortho	20 – 30	58 – 63	600 – 700	10 – 20	Premium Grade

• Viscosity and gel time are customizable and can be tailored to meet customer requirements.

• Modification symbols:

- PA: Pre-Accelerated
- TP: Thixotropic and Pre-Accelerated

• Gel time is measured at 25°C with:

- 0.15% Co Octoate (10% Solution)
- 2% MEKP (Butanox M-50)

Filament Winding

Orthophthalic Type Features:

- Strong and tough basis
- Good water resistance
- Low volumetric shrinkage
- Customizable viscosity and curing times to meet specific customer needs

Isophthalic Type Features:

- Excellent crack and craze resistance
- Excellent corrosion resistance

Applications:

- Industrial pipelines
- Water distribution pipes
- Sewer and drainage pipes
- Oil and gas pipelines
- Pressure vessels



Product	Modifications	Type	Gel time (mins)	Solid Content (%)	Viscosity (cps)	Acid Value (mg KOH)	Remarks
ARTPOLY® 700	PA	Ortho	8 – 16	58 – 63	300 – 350	15 – 25	-
ARTPOLY® 705	PA	Iso	8 – 16	58 – 63	300 – 400	10 – 20	Premium Grade

• Viscosity and gel time are customizable and can be tailored to meet customer requirements.

• Modification symbols:

- PA: Pre-Accelerated

• Gel time is measured at 25°C with:

- 0.25% Co Octoate (6% Solution)
- 1.5% MEKP (Butanox M-50)

SMC / BMC

Orthophthalic Type Features:

- High heat deflection temperature
- Stable thickening behavior

Isophthalic Type Features:

- Excellent heat deflection temperature
- Stable thickening behavior
- Excellent weather performance
- High chemical resistance

Applications:

- Automotive body panels
- Electrical enclosures
- Appliance housings
- Engine covers
- Trunk liners



Product	Modifications	Type	Gel time (mins)	Solid Content (%)	Viscosity (cps)	Acid Value (mg KOH)	Remarks
ARTPOLY® 400	PA	Ortho	15 – 25	60 – 65	700 – 900	15 – 25	-
ARTPOLY® 425	PA	Iso	30 – 40	60 – 65	800 – 1200	10 – 20	Premium Grade

• Viscosity and gel time are customizable and can be tailored to meet customer requirements.

• Modification symbols:

- PA: Pre-Accelerated

• Gel time is measured at 25°C with:

- 0.25% Co Octoate (6% Solution)
- 1.5% MEKP (Butanox M-50)

Pultrusion

Orthophthalic Type Features:

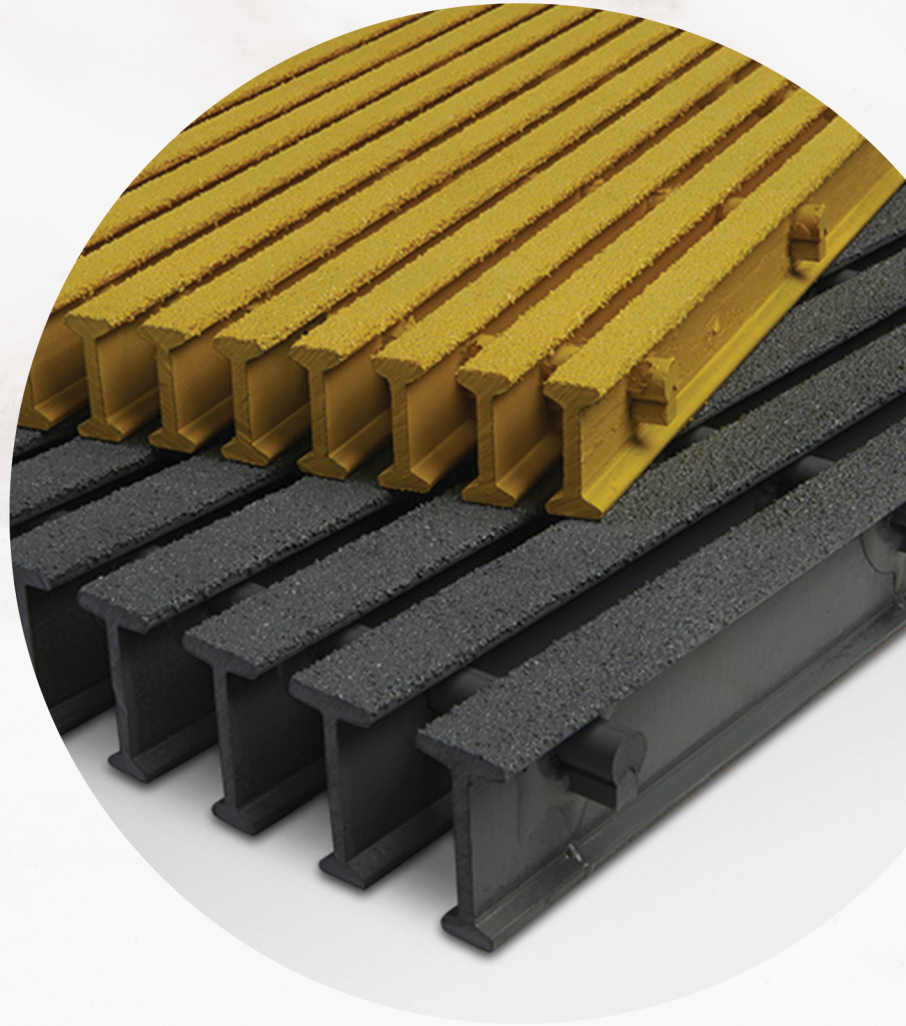
- Good fiber wettability
- High HDT

Isophthalic Type Features:

- Good fiber wettability
- High HDT
- Excellent chemical resistance

Applications:

- Structural profiles
- Cable trays
- Ladder rails
- Window frames
- Utility poles



Product	Modifications	Type	Gel time (mins)	Solid Content (%)	Viscosity (cps)	Acid Value (mg KOH)	Remarks
ARTPOLY® 800	PA	Ortho	15 – 25	60 – 65	700 – 900	15 – 25	-
ARTPOLY® 850	PA	Iso	15 – 25	60 – 65	800 – 1200	10 – 20	Premium Grade

• Viscosity and gel time are customizable and can be tailored to meet customer requirements.

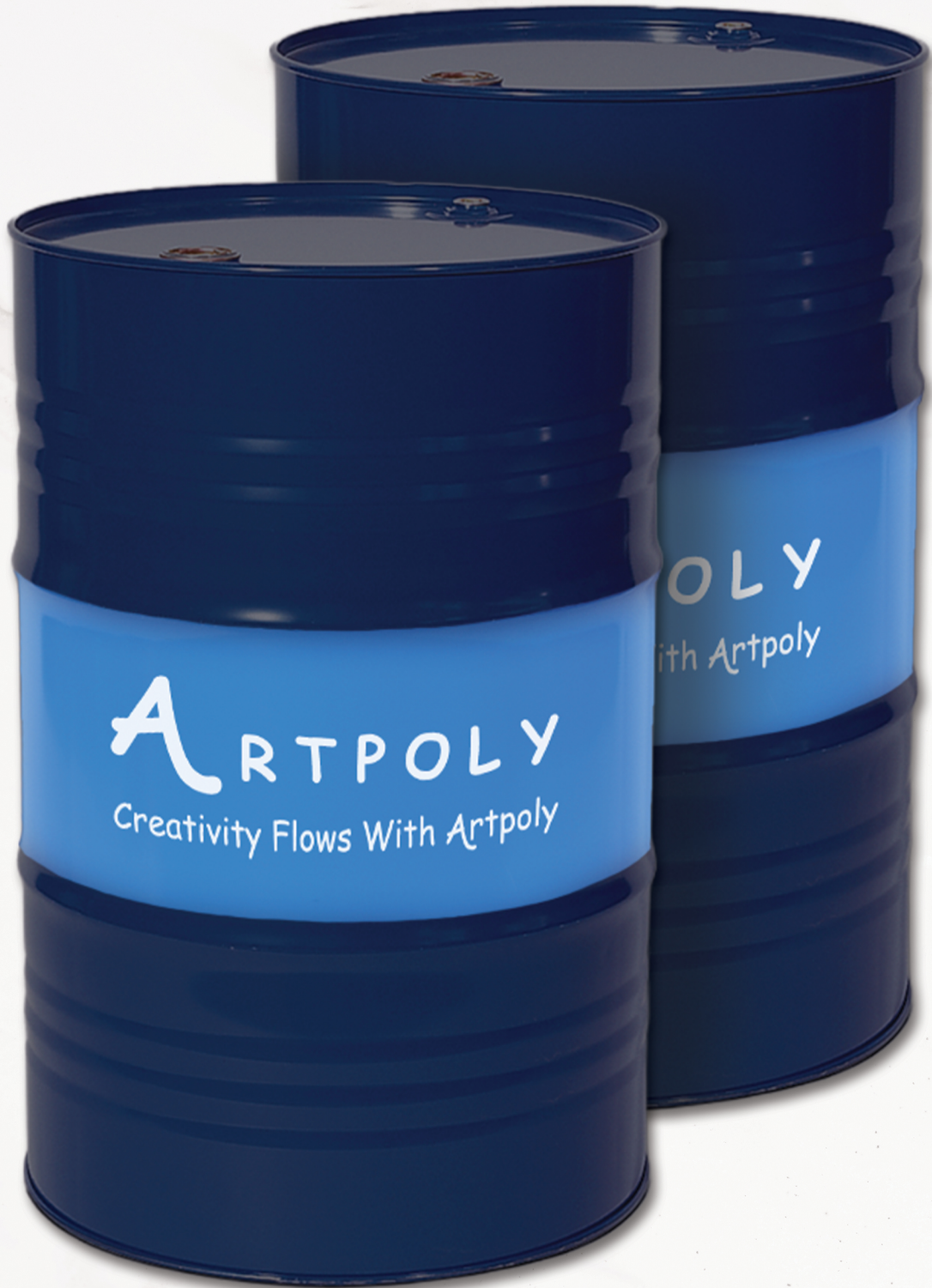
• **Modification symbols:**

- PA: Pre-Accelerated

• **Gel time is measured at 25°C with:**

- 0.25% Co Octoate (6% Solution)
- 1.5% MEKP (Butanox M-50)

UPR Packaging





Acrylic Resin

Solid Surface

Features:

- Batch to batch consistency
- High filler loading
- Low pigment requirement
- Excellent Impact resistance of end product
- Fast curing
- Excellent high - temperature resistance of end product
- Excellent thermoformability
- Solid Surface produced from our resin exceeds NEMA standards

Applications:

- Kitchen countertops
- Bathroom vanities
- Shower bases
- Custom furniture surfaces
- Laboratory worktops



Product	Time to Peak (mins)	Viscosity (Sec)	Application
ARTPOLY® LMR – 8000 (HV)	15 – 45	500-700	Auto/Semi-auto Casting
ARTPOLY® LMR – 8000 (MV)	15 – 45	250-300	Auto/Semi-auto Casting
ARTPOLY® LMR – 8000 (LV)	15 – 45	150-200	Manual Casting

• Time to peak is measured at 25°C with:

- 65% ATH, 35% Resin (1% TBPM (40%) + 0.25% Ca (OH)₂)

Self-Leveling Polymer Concrete

Features:

- High strength with excellent impact resistance.
- Superior chemical and weather resistance
- Rapid installation and minimal downtime

Applications:

- Drainage channels
- Industrial flooring
- Railway sleepers
- Manhole covers
- Bridge overlays



Product	Time to Peak (mins)	Viscosity (Sec)	Application
ARTPOLY® LMR – 8000 (SL)	15-30 min	20-30	Self-Leveling Polymer Concrete

- **Time to peak is measured at 25°C with:**
 - 1-2% BPO (50%) based on resin weight

- **Viscosity at 23°C, ISO Cup 4mm.**

Road Marking

(Cold Plastic)

Features:

- Suitable for high temperatures.
- Permanently elastic.
- Resistant to ageing and weathering.
- Colorfast.
- Abrasion-proof.
- Resistant to de-icing salt and fuels.
- Low tendency to graying.

Applications:

- Highway lane markings
- Pedestrian crossings
- Parking lot lines
- Bicycle lanes
- Airport runways



Product	Time to Peak (mins)	Viscosity (Sec)	Application
ARTPOLY® LMR – 7000 (HV)	15-20 min	75-95	Cold Plastic Road Marking

- **Time to peak is measured at 25°C with:**
 - 1-2% BPO (50%) based on resin weight

- **Viscosity at 23°C, ISO Cup 4mm.**

Acrylic Resin Packaging



Gelcoats

UPR Based Gelcoats

Orthophthalic Type Features:

- Good resistance to water and moisture
- Moderate resistance to UV exposure and yellowing
- Cost-effective option
- Easy to apply and work with
- Suitable for general-purpose applications

Isophthalic Type Features:

- Excellent resistance to water and moisture
- Excellent UV resistance and prevention of yellowing
- Superior chemical resistance
- High durability and long-lasting performance
- Enhanced thermal stability for various environments
- Ideal for applications requiring high mechanical strength

Applications:

- Boat hulls and decks
- Architectural panels
- Bathtubs, shower trays, and sinks
- Water tanks
- General-purpose applications



Product	Modifications	Type	Gel time (mins)	Solid Content (%)	Viscosity (cps)	Acid Value (mg KOH)	Remarks
ARTGEL 3800	-, W	ISO/NPG	15 – 25	-	8,000 – 12,000	-	Premium Grade
ARTGEL 800	-, W	Ortho	15 – 25	-	8,000 – 12,000	-	Economy Grade
ARTGEL 900	-, W	ISO	15 – 25	-	8,000 – 12,000	-	Economy Grade

• Modification symbols:

- C: Clear
- P: Pigmented

• Gel time is measured at 25°C with:

- 1% MEKP (Butanox M-50)

Gelcoat Packaging



ARTPOLY
Creativity Flows With Artpoly

POLY
With Artpoly

18 KG



Pigment Paste

Pigment Paste

A Palette of Possibilities

ARTPOLY offers a diverse range of high-quality pigment pastes, formulated on various chemical bases to cater to multiple applications. Whether you're working on GRP products, marble sheets, acrylic sheets, or other miscellaneous projects, we have the perfect pigment paste to bring your vision to life.

Our Extensive Color Palette

Explore our extensive color palette, encompassing a wide range of RAL codes:

- Classic Neutrals
- Vibrant Hues
- Subtle Shades

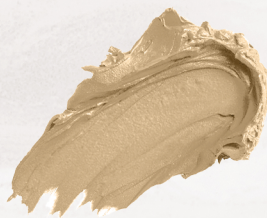
Colors



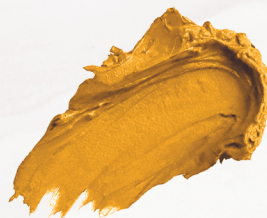
Whiter White



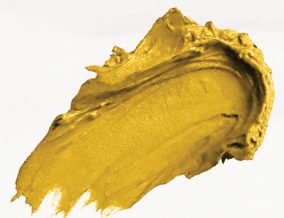
Super White



County Cream



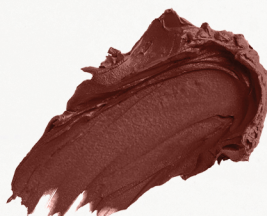
Golden Yellow



Lemon Yellow



Leather Brown



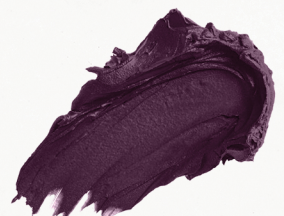
Brown C39



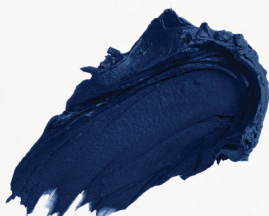
Signal Red



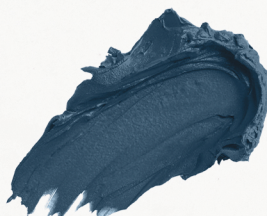
Light Violet



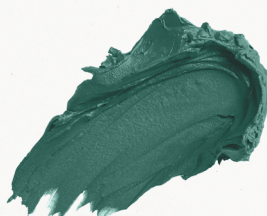
Dark Violet



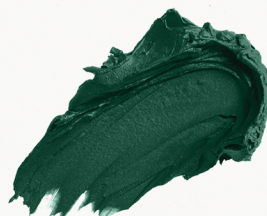
Oxford Blue



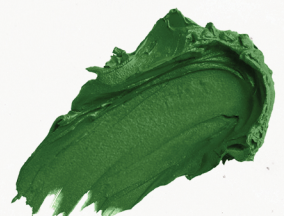
French Blue



Deep Sea Green



Racing Green



Grass Green



Navy Blue

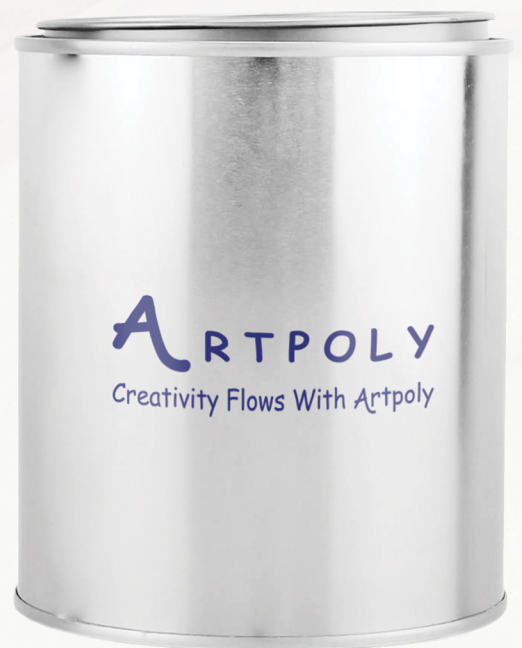


Super Black

Pigment Packaging



20 KG



5 KG



Solvents & Other Chemicals

Other Chemicals & Raw Materials

Product	Active Substance	Purity (%)	Applications
ARTPOLY® Resin Solution	Resin Solution	> 99	Dilution of Unsaturated Polyester Resins
ARTPOLY® Acrylic Solution	Methyl Methacrylate	> 99	Dilution of MMA Resins
ARTPOLY® Acetone	Acetone	> 99.75	Cleaning and Solvent
ARTPOLY® Methylene Chloride	Methylene Chloride	> 99.5	Industrial Cleaning and Solvent

- **Fiberglass**
- **Peroxides**
- **Inhibitors**
- **Accelerators**
- **Mold Release**
- **Titanium Dioxide**
- **UV-Stabilizer**
- **Fire Retardant**
- **Fillers**
 - **ATH**
 - **Calcium Carbonate**
 - **Fumed Silica**

ARTPOLY

Creativity Flows With Artpoly

📍 8045 AL Madinah AL Munawarah Branch ST.,
2276 Al Faisaliyah District, JEDDAH, KSA

✉ info@artpoly.com.sa

☎ 920002964

www.artpoly.com.sa

